

54BS589 Trout Run Hilltop

JAGER P ET *TM

840003145411759 aAa: 321 Beta Cas: A2A2 Kappa Casein: BB
 Born: 8/22/2017

Young Sires

#1 Type, #1 UDC (G-Polled)

DYNAMITE x DRIVER (D) x ANDY *NP

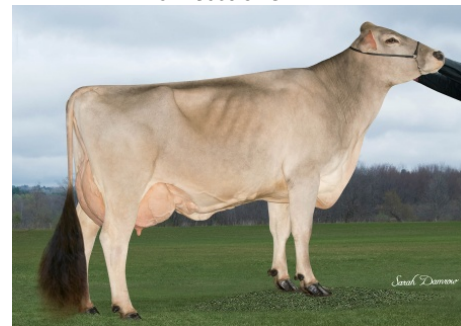
| 04/2019 G-CDCB PERFORMANCE | | | |
|--|---------------------|-------------------------|------------|
| MILK +117 | FAT +25 / +0.09% | PROTEIN +19 / +0.07% | PPR 93 |
| PROD. 59%R N/A DTRS/N/A HRDS TYPE 60%R | | | |
| PL +1.9 | UDC +1.12 | SCS 3.00 | TYPE +0.90 |
| Milking Speed 101 | | Conception (SCR) N/A | |
| Cow Livability -0.3 | | | |
| CE 4.7% | NM\$ \$249 | DPR -0.2 | MOB +0.1 |

| MATING GUIDE | |
|--|---------------|
| + Udder Cleft & Depth + Fore Udder + Dairy Strength + Rear Udder Height & Width | - Thurl Width |
| Rear Legs- Set & Rump Angle- High | |

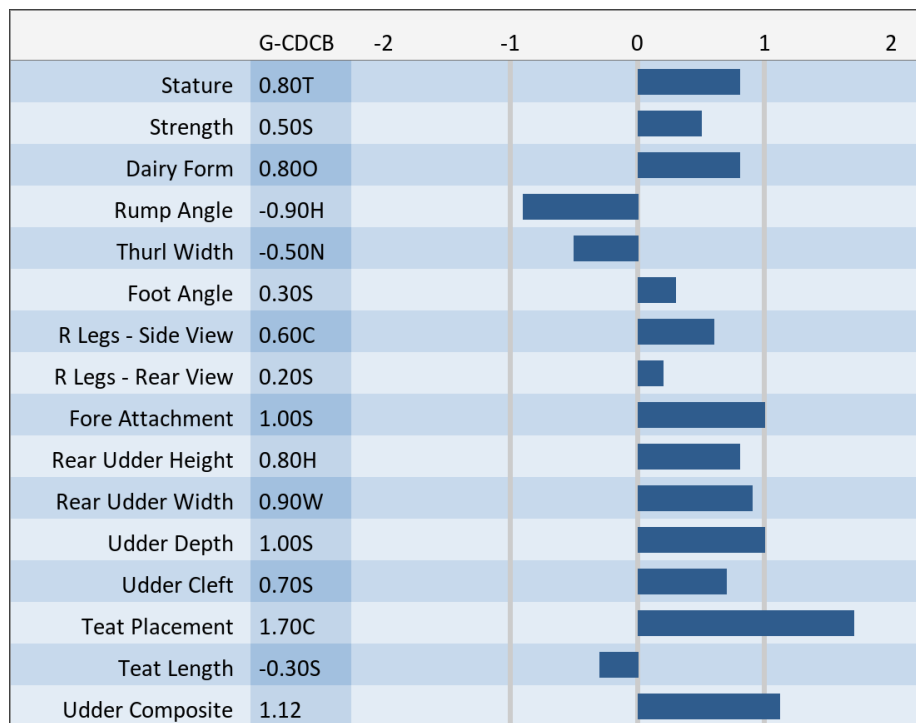
Sire: La Rainbow Bfly Dynamite ETV *TM
Dam: Trout Run Driver Jan P ET "EX-90 EX-91MS"
 4-00 211d 3x 23,839 5.4 1,279 3.4 809
MGS: Hilltop Acres H Driver ET *TM
MGD: Trout Run Jill P ET "VG-85 VG-86MS"
 3-00 312d 2x 18,440 4.8 887 3.4 627



54BS589 JAGER P



Dam: Trout Run Driver Jan P ETV 'EX 90 EX 91MS'



NEW GENERATION GENETICS

www.brownswiss.com

(920) 568-0554

E-mail: info@brownswiss.com

54BS589 Trout Run Hilltop

JAGER P ET *TM

840003145411759

aAa: 321

Beta Cas: A2A2

Kappa Casein: BB

Born: 8/22/2017

MATING RECOMMENDATIONS

TOP MATING CHOICE FOR PPR

1. Lucky Carl
2. Doboy
3. Allbright

TOP MATING CHOICE FOR TYPE

1. Daredevil
2. Rasta
3. Carter

NEW GENERATION GENETICS

www.brownswiss.com

(920) 568-0554

E-mail: info@brownswiss.com