

54BS573 Kulp-Terra LUCKY CARL ET *TM

840003139216990 aAa: 324 Beta Cas: A2A2 Kappa Casein: BB
Born: 8/26/2016

Genomic Gems

#5 FAT & #5 MILK (Genomic)

GET LUCKY x CARTEL x BROOKINGS

12/2020 G-CDCB PERFORMANCE			
MILK +1759	FAT +56 / -0.06%	PROTEIN +49 / -0.04%	PPR 135
PROD. 73%R N/A DTRS/N/A HRDS TYPE 73%R			
PL -0.8	UDC -0.08	SCS 2.92	TYPE +0.40
Milking Speed 93		Conception (SCR) 0.4	
Cow Livability -1.6			
CE 3.2%	NM\$ \$311	DPR -0.9	MOB +0.1

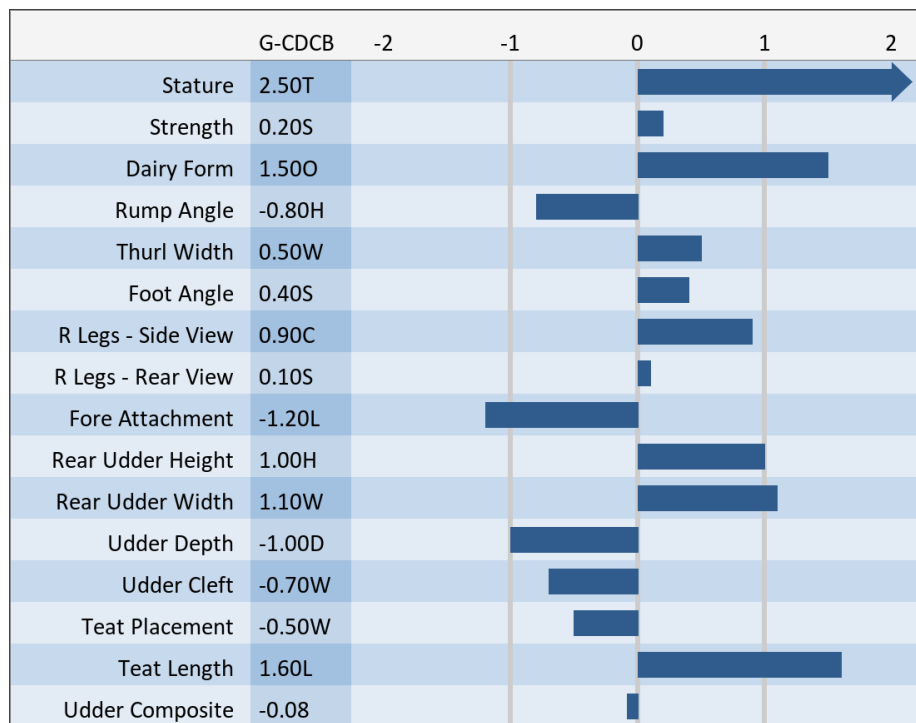
MATING GUIDE

+ Rump Width
+ Teat Placement
+ Size & Strength
+ Rear Udder Height & Width

- Udder Cleft

Rear Legs- Some Set & Rump Angle- High

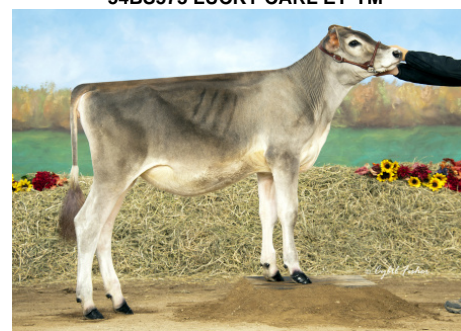
Sire: BMG Lust Get Lucky ET *TM
Dam: Kulp-Terra Cartel Cathy ET "EX-90 EX-90 MS"
2-02 305d 2x 26930 4.5 1208 3.6 978
MGS: Victory Acres Genom Cartel *TM
MGD: Voelkers Brookings Cara "VG-89 EX-90 MS"
2-06 321d 2x 24,779 4.4 1,090 3.5 871



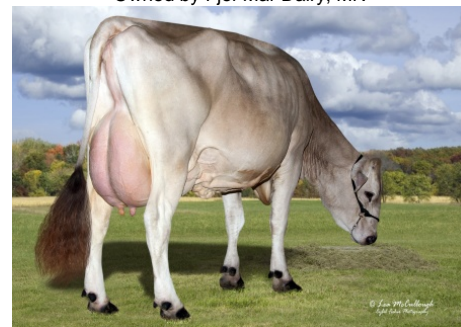
Hilltop Acres Carl Disney



54BS573 LUCKY CARL ET*TM



Fjel-Mar Lucky Carl Fallyn
1st Spring Calf MN State Show, 2019
Owned by Fjel-Mar Dairy, MN



Dam: Kulp-Terra Cartel Cathy ET 'EX 90 EX 90MS' 2nd Lactation

NEW GENERATION GENETICS

www.brownswiss.com

(920) 568-0554

E-mail: info@brownswiss.com

54BS573 Kulp-Terra

LUCKY CARL ET *TM

840003139216990 aAa: 324 Beta Cas: A2A2 Kappa Casein: BB
Born: 8/26/2016

MATING RECOMMENDATIONS

TOP MATING CHOICE FOR PPR

1. Sandstorm
2. Phantom
3. Hampton

TOP MATING CHOICE FOR TYPE

1. Diego
2. Daredevil
3. Juke

NEW GENERATION GENETICS

www.brownswiss.com

(920) 568-0554

E-mail: info@brownswiss.com