

54BS573 Kulp-Terra LUCKY CARL ET *TM

840003139216990 aAa: 324 Beta Cas: A2A2 Kappa Casein: BB
Born: 8/26/2016

Proven Sires

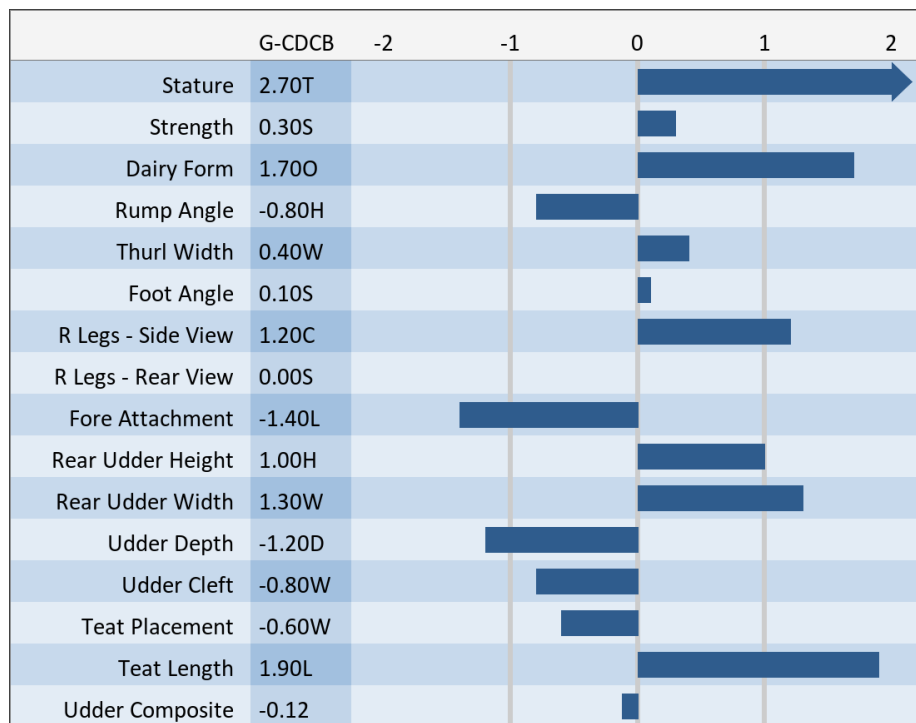
#1 FAT, #2 MILK, #2 PROTEIN, #5 PPR, #5 NM\$, #5 SCR (PROVEN)

GET LUCKY x CARTEL x BROOKINGS

04/2021 G-CDCB PERFORMANCE			
MILK +1924	FAT +67 / -0.05%	PROTEIN +48 / -0.07%	PPR 129
PROD. 83%R 29 DTRS/15 HRDS TYPE 76%R			
PL -1.3	UDC -0.12	SCS 3.01	TYPE +0.30
Milking Speed 93		Conception (SCR) 1.4	
Cow Livability -2.1			
CE 2.8%	NM\$ \$306	DPR -1.6	MOB +0.1

MATING GUIDE	
+ Rump Width + Teat Placement + Size & Strength + Rear Udder Height & Width	- Udder Cleft
Rear Legs- Some Set & Rump Angle- High	

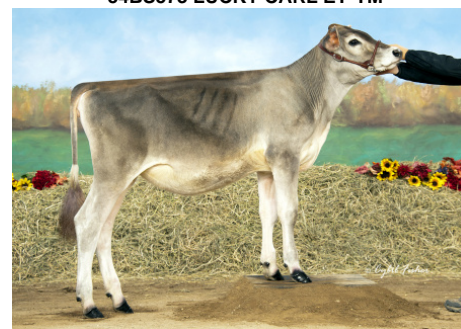
Sire: BMG Lust Get Lucky ET *TM
Dam: Kulp-Terra Cartel Cathy ET "EX-90 EX-90 MS"
2-02 305d 2x 26930 4.5 1208 3.6 978
MGS: Victory Acres Genom Cartel *TM
MGD: Voelkers Brookings Cara "VG-89 EX-90 MS"
2-06 321d 2x 24,779 4.4 1,090 3.5 871



Hilltop Acres Carl Disney
Owned by Hilltop Acres, Iowa



54BS573 LUCKY CARL ET*TM



Fjel-Mar Lucky Carl Fallyn
1st Spring Calf MN State Show, 1999
Owned by Fjel-Mar Dairy, MN



Dam: Kulp-Terra Cartel Cathy ET 'EX 91 EX 91
MS' 2nd Lactation
2-02 365d 2x 31,464 4.5 1,415 3.7 1,152
3-10 365d 2x 34,080 4.2 1,427 3.5 1,207

NEW GENERATION GENETICS

www.brownswiss.com

(920) 568-0554

E-mail: info@brownswiss.com